

EtherPoint

EtherPoint: A custom-tailored PenTeleData product designed for fast-growing businesses that need to move information between locations at the speed of light.

EtherPoint benefits organizations with multiple locations and complex dedicated Internet requirements. PenTeleData's DirectNet EtherPoint can meet all of your organization's growing bandwidth needs by easily supplying constant, reliable, high-speed Internet connectivity to all of the locations of your enterprise. PenTeleData can streamline and simplify your corporate-wide area network by introducing the unparalleled speed, security, efficiency and dependability of EtherPoint to your network.

Stop paying too much for too many dedicated high-speed Internet circuits when you can simply link up your whole network an easier way. A high-speed, dedicated connection, PenTeleData's DirectNet EtherPoint is a committed Internet circuit capable of transporting Internet Protocol (IP) traffic to your organization at varied rates. With a minimal hardware investment, PenTeleData's DirectNet EtherPoint provides speeds of 512 kbps to 100 Mbps. Rather than having to purchase several T1s — or an OC-3 — connect to EtherPoint and receive all of the bandwidth you need.

Are you wary of untried technologies and want to commit your resources to a proven highspeed Internet solution? Looking for a dedicated commercial Internet service that is easy to install and maintain?

EtherPoint is the ideal product for the business consumer who requires a flexible, reliable, scaleable dedicated high-speed Internet connection for their corporate-wide area network.

Unlike a T1 Internet connection, where customer data is carried over telephone company switching equipment, PenTeleData's EtherPoint is a point-to-point or point-to-multi-point private network. This secure EtherPoint solution ensures that customer data never leaves the PenTeleData network.

PenTeleData provides a network-based connection from the customer's location to one of numerous PenTeleData ATM Points of Presence (PoPs). The link is cross-connected through our switching equipment where the Internet bandwidth is then fitted to meet the customer's needs.

To receive an Ethernet connection for your organization, only a standard full-duplex plug is required. At the point of demarcation, the customer receives a standard Ethernet cable to plug into a PC, switch or router (Note: a switch is not the same as a hub). Like a T1 point-to-point line plugging into the customer's router, EtherPoint is easy to install. What makes

"Exclusively offered by PenTeleData, EtherPoint effortlessly delivers reliable, high-speed dedicated Internet connectivity to any organization's multiple locations."

Jeff Reinhard
Vice President of Operations
- PenTeleData

EtherPoint

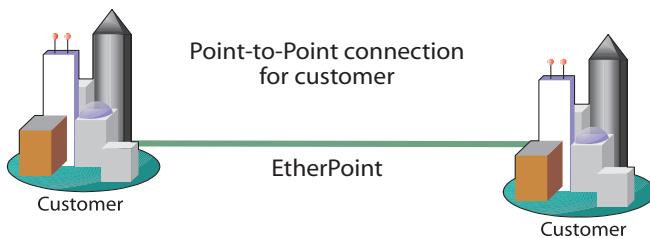
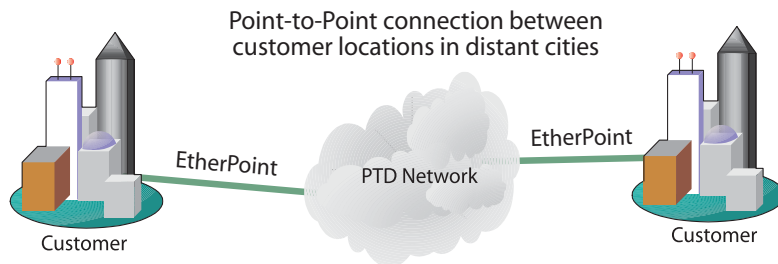
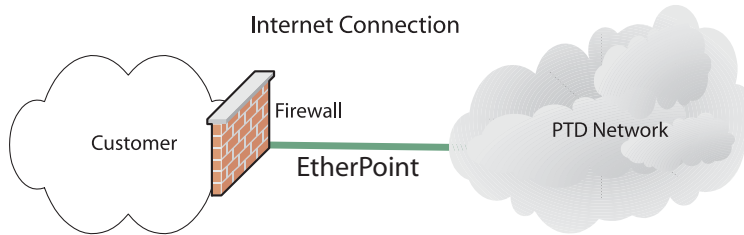
EtherPoint better than a wireless or T1 connection? Simpler equipment needs satisfy the connection: It's just Ethernet. When it's all said and done, a piece of copper connection plugs you into EtherPoint speeds of up to 100 Mbps.

Only a full-duplex plug is all the equipment required to receive an Ethernet connection for the EtherPoint service.

Features of EtherPoint:

- EtherPoint hardware is inexpensive.
- EtherPoint is easily scaleable and offers graduated bandwidth.
- EtherPoint saves any organization money, keeps hardware overhead costs low.
- EtherPoint is reliable and functions on dedicated, proven technology.
- EtherPoint is a most secure, high-speed dedicated Internet solution.

EtherPoint is a scaleable solution. This means that EtherPoint-provided bandwidth can be increased without any hardware or equipment changes, making upgrading Internet access to your network a smooth, seamless transition. No equipment changes, no additional hardware costs, no on-site visit. It doesn't take much for a customer to upgrade their EtherPoint connection: it's as simple as a phone call.



Multiplex EtherPoint

Another Etherpoint solution PenTeleData offers is called Multiplex Etherpoint. This service links an Ethernet port to a customer's EtherPoint transport line, similar to the function of such standard, non-multiplexed EtherPoint services. But where Multiplex EtherPoint differs is that this Ethernet port supports multiple Virtual Local Area Networks (VLANs) linked to the data transport. Each VLAN is connected to a Private Virtual Circuit (PVC) that must then be connected through PenTeleData's Asynchronous Transfer Mode (ATM) network to an ATM connection, another Multiplex EtherPoint port, PenTeleData Internet bandwidth or a standard EtherPoint port. Call our sales team today at 1.800.281.3564 for any information on an Etherpoint or Multiplex etherpoint connection.

Benefits of EtherPoint:

EtherPoint Internet Connection:

- Easily Scaleable*
- Ethernet Port on Equipment*
- No CSU/DSU*
- E-rate eligible connection*
- Cost-effective*

EtherPoint Point-to-Point Connection:

- Easily Scaleable*
- Ethernet Port on Equipment*
- No CSU/DSU, no IMA*
- E-rate eligible connection*
- No Cross LATA charges*

FOR MORE INFORMATION

To learn how your company can take advantage of this and the other industry-leading technologies from PenTeleData, call us at 1.800.281.3564 or

E-Mail: prosales@ptd.net

PenTeleData

540 Delaware Avenue
PO Box 197
Palmerton, PA 18071
Tele: 1.800.281.3564
Fax: 610.826.4707

Product Information:

E-mail: prosales@ptd.net
Web: www.penteledata.net



CS-EP-NM-021804