

Multiplex EtherPoint

A customized PenTeleData service designed for growing businesses that move large amounts of data across networks between multiple locations, Multiplex EtherPoint benefits organizations with complex dedicated Internet requirements. Meet your organization's bandwidth demands and provide constant, reliable, high-speed Internet connectivity to all of your locations: streamline and simplify your corporate-wide area network and introduce the unparalleled speed, security, efficiency and dependability of PenTeleData's Multiplex EtherPoint.

What is Multiplex EtherPoint?

This service links an Ethernet port to a customer's EtherPoint transport line, similar to the function of such standard, non-multiplexed EtherPoint services. But where Multiplex EtherPoint differs is that this Ethernet port supports multiple Virtual Local Area Networks (VLANs) linked to the data transport. Each VLAN is connected to a Private Virtual Circuit (PVC) that must then be connected through PenTeleData's Asynchronous Transfer Mode (ATM) network to an ATM connection, another Multiplex EtherPoint port, PenTeleData Internet bandwidth or a standard EtherPoint port.

Multiplex, by popular definition, describes an object with various features or forms. In this sense, multiplex is defined as the communication of two or more signals over a common data channel. PenTeleData's Multiplex EtherPoint service offers customers the ability to maintain multiple dedicated, high-speed data connections based on only one physical EtherPoint connection, saving the need to spend extra money on costly high-speed line charges. Commercial or organizational customers benefit most from Multiplex EtherPoint by employing virtual lines that link to their multiple physical locations.

PenTeleData's Multiplex EtherPoint port technology utilizes 802.1q tagged VLANs to separate unique connections, and then maps each VLAN into a Private Virtual Circuit (PVC) at our ATM/Ethernet switch. In this scenario, the customer must have equipment capable of breaking out the 802.1q tagged VLANs in order to connect to the transport linked to the Multiplex port. However, some endpoints do not necessarily need to support 802.1q, since there remain a few routers that cannot yet support 802.1q.

Multiplex EtherPoint port will connect to any EtherPoint transport rated between 2 Mbps to 100Mbps, and the port will be locked at 10 Mbps or 100Mbps to match the physical transport. The customer equipment must also be locked at full duplex (permitting simultaneous transmissions in both directions), at 10 Mbps or 100 Mbps. Finally, if this is connected to a partial-speed EtherPoint transport (at 2,4,6,10,25, 50 or 100 Mbps), the sum of all the PVCs cannot exceed the purchased EtherPoint transport speed.

"The power of PenTeleData's Multiplex EtherPoint lets commercial customers to inexpensively link networks together from multiple locations at scalable high speeds over reliable technology."

Jeff Reinhard
Vice President of Operations
- PenTeleData

Multiplex EtherPoint

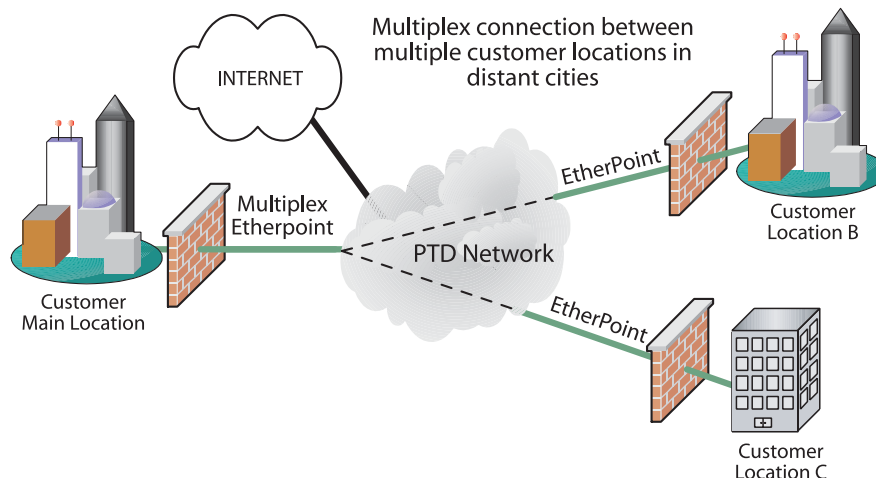
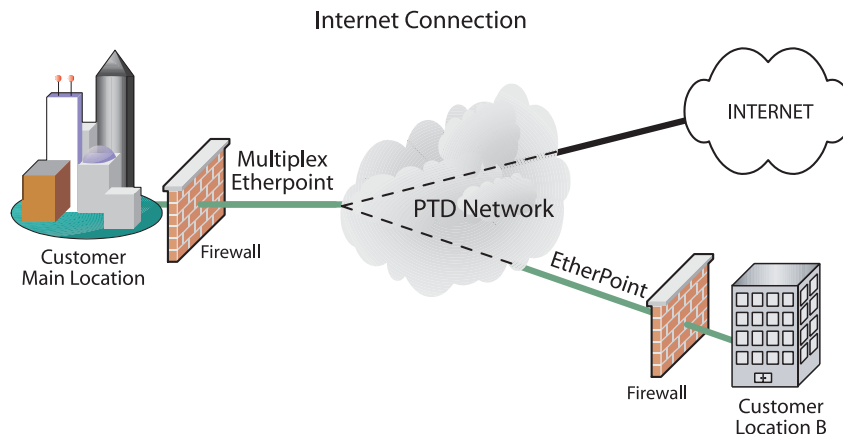
As is customary with all of our dedicated commercial services, PenTeleData's round-the-clock Network Control Center maintains quality customer care, support and monitoring of Multiplex EtherPoint service.

PenTeleData's Multiplex EtherPoint offers a service that bundles all necessary ports, lines and PVCs needed to create an innovative solution that provides customers with all the pieces necessary to establish a Wide Area Network (WAN). With this service, a customer can connect with another EtherPoint WAN, a PenTeleData high-speed Internet service or an ATM WAN.

This service is ideal for customers who intend to connect multiple buildings and one or more Internet connections where any one building needs more than one logical (secure) connection. Simply and easily link up your entire network with a high-speed, dedicated connection: PenTeleData's Multiplex EtherPoint is a committed Internet circuit capable of transporting Internet Protocol (IP) traffic to your organization at varied rates.

PenTeleData provides a network-based connection from the customer's location to one of numerous PenTeleData ATM Points of Presence (PoPs). The link is cross-connected through our switching equipment where the Internet bandwidth is then fitted to meet the customer's needs.

As a scalable solution, Multiplex EtherPoint-provided bandwidth can be increased without any hardware or equipment changes (depending upon customer's current configuration), making upgrading Internet access to your network a smooth, seamless transition. No equipment changes, no additional hardware costs, no on-site visit. It doesn't take much to upgrade — it's as simple as a phone call.



Features:

- Functions on dedicated, durable technology.
- Offers specially-tiered bandwidth and is scalable from 2 Mbps to 100 Mbps.
- Hosts a single physical connection for multiple logical networks.
- High-speed, reliable fiber connections to customer locations.
- Enables low-cost unencrypted VPN's.
- Provides guaranteed bandwidth as with traditional DS-1 and DS-3 services.

Benefits:

- Economical and helps maintain low operating costs.
- Protected, dedicated high-speed Internet solution.
- Hardware is affordable.
- Seamlessly links together multiple locations and networks.
- Offers unparalleled speed, flexibility and customization.
- Includes PenTeleData's 24/7 Network Control Center support.

FOR MORE INFORMATION

To learn how your company can take advantage of this and the other industry-leading technologies from PenTeleData, call us at 1.800.281.3564 or

E-Mail: prosales@ptd.net

PenTeleData

540 Delaware Avenue
PO Box 197
Palmerton, PA 18071
Tele: 1.800.281.3564
Fax: 610.826.4707

Product Information:

E-mail: prosales@ptd.net
Web: www.penteledata.net



CS-MEP-NM-022304